



Fine Finish Sprayers

Graco's Complete Line of Fine Finish Sprayers and Accessories



PROVEN QUALITY. LEADING TECHNOLOGY.

There is nothing like a Graco® sprayer.

Quality. Performance.
Durability. Productivity.

Graco fine finish sprayers deliver on all counts. Whether you're a contractor focused on small residential or a large contractor tackling the biggest projects every day, Graco offers you the best, most extensive line of spraying equipment to meet your needs. Most importantly, when you choose Graco, you know that you are choosing the highest quality product in the industry. You can take pride in the fact that Graco fine finish sprayers are designed, manufactured, and assembled right in the USA with imported global components. *We do!*



What is the G4 Difference? Simply put, it's Graco's commitment to provide you with the very best electric sprayers, backed by a solid reputation for proven quality, maximum performance, reliable warranty coverage and unmatched on-the-job productivity. Graco sprayers are designed to exceed the professional contractor's standards for quality and performance. Graco is the name to turn to today and as your business grows.

PROVEN**QUALITY**

100% factory-tested and field-proven design, coupled with cutting-edge technology, keep Graco sprayers performing reliably on the job for years.

MAXIMUM**PERFORMANCE**

Higher output with superior control ensures the highest quality finish for every job.

INDUSTRY-LEADING**WARRANTY**

Every Graco fine finish sprayer is backed by our full warranty coverage and more than 80 years of proven commitment to the professional contractor.

UNMATCHED**PRODUCTIVITY**

Exclusive Endurance™ pumps deliver long life and reliable performance, while the Endurance Advantage and Endurance Now Programs eliminates downtime by enabling you to always have a spare pump on hand for quick job site change-out.

For patent information see www.graco.com/patents.

Graco has the *right* fine finish sprayer for the job.

No matter your need, Graco has your *Total Solution* for your fine finishing applications. Whether it's a FinishPro HVLP, FinishPro GX Airless, or a FinishPro II Air-Assisted Airless sprayer, Graco's line of sprayers yield unmatched results in productivity and quality of finish.

Fine Finishing Solutions Guide



HVLP (HIGH-VOLUME LOW-PRESSURE)

- Spray small to medium jobs
- HVLP is built for extreme control jobs
- Standard, ProContractor and ProComp packages available – built for you!



GX Airless

- Spray medium to large projects
- Fast startup and cleanup with 5.7 L hopper
- Compact, lightweight design
- Spray without thinning



Air-Assisted Airless

- Large, long-duration projects that require large volumes of material
- Delivers both precision spraying and increased productivity
- Softer pattern, more control, higher transfer, and *less overspray*
- Ability to switch from air-assisted airless to pure airless spraying



| CLASSIFICATION | FINISHPRO HVLP | FINISHPRO GX AIRLESS | FINISHPRO II AIR-ASSISTED AIRLESS |
|--------------------------------------------------------------------------------------------------|---------------------------------------------------------------------------------------------------------|-------------------------------------------------------------------------------------------------------------------------------------|-------------------------------------------------------------------------------------------------------------|
| | EXTREME CONTROL | HIGH PRODUCTIVITY | |
| TECHNOLOGY | High Volume of Air with Low Volume of Fluid Results in Finest Quality Finish | High-Pressured Fluid Results in Fine Quality Finish with High Production Rate | High-Pressured Fluid combined with Pressurized Air Results in Fine Quality Finish with High Production Rate |
| FINISH QUALITY | Automotive Quality | Furniture/Cabinet Quality | |
| SPRAY PATTERN SIZE | 1/8 in – 8 in Fan Width (0.3 cm – 20 cm) | 2 in – 12 in Fan Width (4 cm – 30 cm) | |
| PRODUCTION RATE | Up to 18 oz/min | Up to 30 oz/min | |
| TRANSFER EFFICIENCY (% OF MATERIAL SPRAYED THAT ADHERES TO THE SURFACE VS. IN THE AIR) | 85 – 95% | 50 – 60% | 70 – 80% |
| TYPICAL APPLICATIONS | Small, Detailed Work Railings, Shutters, Mantels, Tubs, Trim, Staircases, Cabinets, Furniture | Medium – Large Surfaces Doors, Trim, Cabinets, Molding, Garage Doors, Lockers, Decorative Steel Structures, and much more | |
| CHARACTERISTICS | Most Control | Fast Application | Best Balance Between Speed and Quality |
| AVERAGE JOB SIZE | < 4L | < 19L | > 11L |

HVLP Technology

Engineered for superior atomization in the widest range of materials, Graco HVLPs are one of the coolest running, longest life HVLP sprayers on the market. Now available in Standard, ProContractor and ProComp models.

Greater Control

Choose level of control!

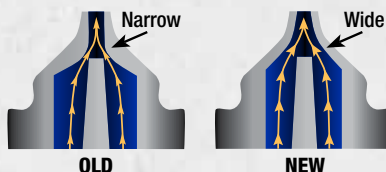
- ▶ Simplified flow control on Edge® II gun provides easy operation with exclusive patented technology
- ▶ EDGE II PLUS adds more control options! Pattern, airflow, and fluid flow controls – independent from each other



Increased Productivity

- ▶ All Graco EDGE II guns have 4X more productivity – getting you on and off the job FASTER
- ▶ Exclusive, proprietary turbine design builds more pressure through each stage, resulting in more performance at the gun

WORK 4X FASTER!



Cool Running Systems

- ▶ SmartStart™ feature allows system to only run when trigger is pulled – extending life and reducing heat*
- ▶ Stainless Steel Tough Box design promotes efficient cooling
- ▶ Exclusive TurboControl feature limits heat by adjusting performance when coatings don't require full pressure

**SMART
START**
(Patent Pending)



Adjust the TurboControl turbine speed to match the performance you require





Reduced Noise

Patent Pending SmartStart Turbine*

**SMART
START**

- ▶ Automatically shuts off when not in use – if you're not spraying, it's not running
- ▶ Reduces jobsite noise, resulting in less fatigue
- ▶ Automatic shut-off reduces heat and extends turbine life



Easy Setup, Spray & Cleanup

- ▶ Convenient FlexLiner™ Bag System makes changing out materials fast and easy
- ▶ Finish jobs faster and move on to the next
- ▶ FlexLiner sprays in any direction to reach those tough spots – even upside down
- ▶ Quick Release Needles for fast cleaning and change out (Patented)



Smaller & Lighter!

- ▶ Maximum jobsite portability – get jobs done faster and easier
50% smaller size and 30% lighter than previous model
- ▶ Rugged, stainless steel enclosure protects the turbine on the job and during transport
- ▶ On-Board Gun & Cup Holder allows for easy transport and paint refills with less spills*



HVLP

FinishPro HVLP 7.0/9.0

STANDARD SERIES

HVLP 7.0

PART #

17R074

HVLP 9.0

17R075

INCLUDES

HVLP 7.0 STANDARD SERIES UNIT:

- EDGE II Gun
- 1 qt (1 l) Cup with FlexLiner™
- #3 Quick Release Fluid Set
- 20 ft (6 m) Super-Flex Air Hose

HVLP 9.0 UNIT STANDARD SERIES UNIT:

- EDGE II Gun
- 1 qt (1 l) Cup with FlexLiner
- #3 Quick Release Fluid Sets
- 20 ft (6 m) Super-Flex Air Hose



FinishPro HVLP Sprayers

EXCLUSIVE TURBOFORCE™ TECHNOLOGY

Graco HVLP sprayers are now available in several different models – Standard, ProContractor and ProComp. Engineered for superior atomization in the widest range of materials. Graco HVLPs are the coolest running, longest life HVLP sprayers on the market today.



Standard Series

- ▶ Perfect for small jobs
- ▶ Offers everyday reliability
- ▶ Just the essential features you need

Standard Features

TurboForce™ Technology



- ▶ Exclusive, proprietary turbine design builds more pressure through each stage, resulting in more performance at the gun
- ▶ More air flow and air pressure means higher production with less thinning of material
- ▶ Generates less heat and provides longer turbine life

Turbo Control System

- ▶ Adjust the TurboForce turbine speed to match the performance you require
- ▶ Reduces heat build up
- ▶ Runs quieter
- ▶ Extends turbine system life

Standard Filtration System

- ▶ Washable filter extends motor life and ensures a quality finish
- ▶ No tools required to remove
- ▶ Out performs foam filters commonly used on other HVLP sprayers



EDGE II Gun

- ▶ Patented Single User Control combines air flow into one simple control
- ▶ 4X more productivity
- ▶ FlexLiner Bag System

Super-Flex™ Air Hose

- ▶ 15% lighter weight than other leading brands for more control at the gun
- ▶ 6m length (Standard Series)
- ▶ 9m length (ProContractor Series)
- ▶ No tools needed to connect

FlexLiner Bag System

- ▶ FlexLiner Paint Bag System replaces traditional material cups
- ▶ Spray at any angle with no adjustment – even upside down!



Stainless Steel “Tough Box” Design

- ▶ Rugged, all steel enclosure protects the turbine on the job and during transport
- ▶ 50% smaller size
- ▶ 30% lighter



ProContractor Series

- ▶ Ideal sprayer for small-to-medium jobs
- ▶ Offers unmatched life with SmartStart
- ▶ Loaded with features that offer convenience, control, and produce a superior spray finish



ProComp Series

- ▶ Built to deliver for medium-to-large jobs
- ▶ Offers unmatched life with SmartStart
- ▶ Loaded with features that offer higher production, more control and produce a superior spray finish
- ▶ Double the fluid capacity



Includes ALL Standard Series Features PLUS...

SmartStart™ Turbine

- ▶ Automatically shuts off when not in use—if you're not spraying, it's not running
- ▶ Reduces jobsite noise, resulting in less fatigue
- ▶ Automatic shut-off reduces heat and extends turbine life



TurboControl System with LED Display

- ▶ Adjust the TurboForce turbine speed to match the performance you require
- ▶ Reduces heat build up
- ▶ Runs quieter
- ▶ Extends turbine system life
- ▶ 50% longer hoses

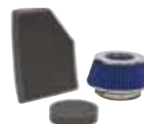


EDGE II Plus Gun

- ▶ Ultimate control with independent user controls for material volume, air flow, and spray fan size
- ▶ 4X more productivity
- ▶ FlexLiner Bag System

Industry Leading Dual Filtration System

- ▶ Automotive-grade filter has high performance filtration
- ▶ Outperforms foam and traditional paper filters used on most HVLP systems



Utility Toolbox

- ▶ Separate Tool storage for extra needles and nozzles



On-Board Gun and Cup Holder

- ▶ Holds gun when not in use
- ▶ Allows for easy paint refills with less spills

HVLP

FinishPro HVLP 7.0/9.0/9.5

PROCONTRACTOR SERIES

| | PART # |
|----------|--------|
| HVLP 7.0 | 17R078 |
| HVLP 9.0 | 17R079 |
| HVLP 9.5 | 17R080 |

INCLUDES

HVLP 7.0 PROCONTRACTOR UNIT:

- EDGE II PLUS Gun
- 1 qt (1 l) Cup with FlexLiner
- #3 Quick Release Fluid Set
- 30 ft (9 m) Super-Flex Air Hose

HVLP 9.0 PROCONTRACTOR UNIT:

- EDGE II PLUS Gun
- 1 qt (1 l) Cup with FlexLiner
- #3 & #4 Quick Release Fluid Sets
- 30 ft (9 m) Super-Flex Air Hose

HVLP 9.5 PROCONTRACTOR UNIT:

- EDGE II PLUS Gun
- 1 qt (1 l) Cup with FlexLiner
- #3, #4 & #5 Quick Release Fluid Sets
- 30 ft (9 m) Super-Flex Air Hose
- 4 ft (1.2 m) Whip Hose

FinishPro HVLP 9.5

PROCOMP SERIES HVLP 9.5

| PART # |
|--------|
| 17R081 |

HVLP 9.5 PROCOMP UNIT:

- EDGE II PLUS Gun
- 2 qt (1.9 l) Remote Cup and Shoulder Strap, 5 ft (1.5 m) material and air hose, FlexLiner Conversion Kit
- #3, #4, & #5 Quick Release Fluid Sets
- 30 ft (9 m) Super-Flex Air Hose
- 4 ft (1.2 m) Whip Hose



HVLP

FinishPro HVLP EDGE II GUN

DESCRIPTION
HVLP EDGE II GUN
WITH FLEXLINER

PART #
17P481

INCLUDES

- 1 qt (1 l) with FlexLiner Cup
- #3 Quick Release Fluid Set

DESCRIPTION
HVLP EDGE II GUN WITH
METAL CUP

PART #
17P653

INCLUDES

- 1 qt (1 l) Metal Cup
- #3 Quick Release Fluid Set

Having the *right gun* can give you the competitive edge in today's market.

Maximize your spraying performance with the innovative HVLP EDGE II and EDGE II PLUS Guns. With cutting edge technology such as streamlined, intuitive gun controls, Quick Release fluid set and new exclusive air cap design that increases the fluid flow, the HVLP EDGE Gun will help you achieve the highest quality finish available in fine finish spraying.

EDGE II Gun



Single User Control Patented

- ▶ Combines material and air flow into one simple control
- ▶ Optimized to spray the majority of fine finish applications
- ▶ Quick adjustment with 360° rotation and indicator for repeatable spray setting



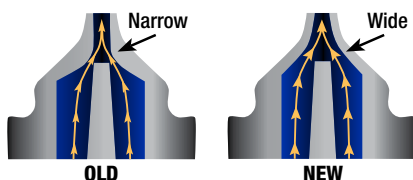
- ▶ One Simple control to adjust both material and airflow together



2017 Breakthrough Features found on ALL EDGE II & EDGE II PLUS Guns

4X More Productivity

- ▶ Get your job done in 25% the time
- ▶ New exclusive Graco air cap design increases the fluid flow in every needle by 4X



FlexLiner Bag System

For the first time, spray in any direction – only with Graco's HVLP sprayers with FlexLiner Technology.

- ▶ FlexLiner Paint Bag System replaces traditional material cups for maintenance free operation
- ▶ Spray at any angle with no adjustment – even upside down
- ▶ Easy Cleanup
 - Reuse liner or toss, it's your choice
 - No suction tube to clean



HVLP

FinishPro HVLP EDGE II PLUS GUN



EDGE II Plus Gun

Ultimate Control

- ▶ Independent User Controls
 - Material Volume Control
 - Air Flow Control
 - Spray Fan Size Control
- ▶ Quick adjustment with full 360° degree rotation



- ▶ Separate Material Volume and Air Controls



- ▶ Turn to adjust pattern height

| DESCRIPTION | PART # |
|--------------------------------------|--------|
| HVLP EDGE II PLUS GUN WITH FLEXLINER | 17P483 |

INCLUDES

- 1 qt (1 l) FlexLiner Cup
- #3 Quick Release Fluid Set

| DESCRIPTION | PART # |
|--------------------------------------|--------|
| HVLP EDGE II PLUS GUN WITH METAL CUP | 17P484 |

INCLUDES

- 1 qt (1 l) Metal Cup
- #3 Quick Release Fluid Set

| DESCRIPTION | PART # |
|-------------------------------|--------|
| HVLP EDGE II PLUS GUN PROCOMP | 17P654 |

INCLUDES

- #3 Quick Release Fluid Set

Quick Release Needles Patented

- ▶ Change out needles from the front of the gun with just a click
- ▶ Easy to change, easy to clean – no tools needed



1. Remove front air cap and nozzle.

2. Slide trigger lever to release needle.

3. Pull needle out.



Ergonomic Gun Handle

- ▶ Lightweight and comfortable while spraying
- ▶ Form-fitted handle stays cool to the touch for extended use

EasyGlide™

- ▶ 75% lighter trigger pull than the competition
- ▶ 2-finger design gives ultimate control while spraying

Adjustable Air Cap

- ▶ 3-position rotation quickly changes spray pattern – horizontal, vertical, round



ROUND PATTERN
1/8 in – 4 in (0.3 cm – 10 cm) Diameter



HORIZONTAL FAN
1 in – 8 in (2.5 cm – 20 cm) Width



VERTICAL FAN
1 in – 8 in (2.5 cm – 20 cm) Width

HVLP Accessories

FINISHPRO HVLP SPRAYERS

ARTISAN AIR VALVE KIT – 17S192

- Provides the ultimate air control for specialty, multi-spec applications
- Plugs directly into back of EDGE II gun

HVLP EDGE II GUN EXTENSION, 12 in (30 cm) – 17P491

- Attaches directly to the HVLP EDGE II gun for extended reach and spraying hard-to-reach areas
- Ability to spray in any direction–360° rotation

QUICK RELEASE FLUID SETS

- For HVLP EDGE II guns only
- Change out needles from the front of the gun with just a click

| | Needle: | Size: | Material: |
|--------|---------|------------------|-----------------------------------------------------------------------------------------|
| 17P485 | #2 | .032 in (0.8 mm) | Ultra fine finish with inks, dyes, non-wiping stains, automotive finishes |
| 17P486 | #3 | .051 in (1.3 mm) | Fine finish lacquers, stains, enamels, epoxies, urethane, varnish |
| 17P487 | #4 | .071 in (1.8 mm) | High output with enamels, epoxies, urethane, varnish, primers |
| 17P488 | #5 | .087 in (2.2 mm) | Higher output with enamels, epoxies, urethane, varnish, primers, latex, multi-spec |
| 17P489 | #6 | .098 in (2.5 mm) | Higher output with enamels, epoxies, urethane, varnish, primers, latex, multi-spec |
| 17P490 | #7 | .115 in (2.8 mm) | Highest output with enamels, epoxies, urethane, varnish, primers, latex, and multi-spec |

HVLP CUPS, POTS AND LINERS

| | |
|--------|-----------------------------------------------------------------------------------------------|
| 17R462 | 32 oz (.94 l) FlexLiner HVLP Assembly (Cup, Liner, Lid, Cap) |
| 17A226 | 32 oz (.94 l) FlexLiner Bags - 3 pack |
| 17P212 | 32 oz (.94 l) FlexLiner Bags - 25 pack |
| 17S146 | HVLP FlexLiner Cap |
| 244130 | 1 qt (.9 l) Siphon Metal Cup |
| 17S115 | 1/2 qt (.47 l) Cup over kit - Edge II Only |
| 17S116 | 1/2 qt (.47 l) Cup over kit - Edge II PLUS Only |
| 287819 | 2 qt (1.9 l) Cup with Lid and 5 ft (1.5 m) Material and Air Hose—for use with ProComp Sprayer |
| 112491 | 2 qt (1.9 l) Cup Liners (40-pack) |

FILTERS AND STRAINERS

| | |
|--------|-------------------------------------------|
| 17R296 | Standard Series Filter Kit |
| 17R298 | ProContractor & ProComp Series Filter Kit |
| 240267 | Cone Material Strainers (3-pack) |

SUPER-FLEX HOSES AND FITTINGS

- Over 15% lighter weight and increased hose flexibility
- Connect hoses together for a maximum of 60 ft (18.2 m) extended length

| | |
|--------|------------------------------------------------------------------------------------------------------------------|
| 17R299 | Super-Flex Whip Air Hose, 4 ft (1.2 m) |
| 17R300 | Super-Flex Air Hose, 20 ft (6.1 m) |
| 257159 | Super-Flex Air Hose, 30 ft (9 m) |
| 241423 | Super-Flex Material and Air Hose Assembly with Quick Connects, 30 ft (9 m) Use with Remote Gun (not included) |
| 240476 | Material Hose, 3/8 in x 30 ft (4.8 mm x 9 m)—Use with Remote Gun (not included) |
| 17R301 | Quick Disconnect Ball Valve (Air Hose to Gun) |
| 240282 | Quick Disconnect Fitting (Air Hose to Sprayer) |
| 240069 | 2 Gun Y Connector (f/m/m) |

MAINTENANCE AND REPAIR KITS

| | |
|--------|----------------------------------------------------------|
| 256960 | HVLP EDGE II Gun Packing Repair Kit |
| 17P708 | HVLP EDGE II Gun Full Seal Kit |
| 17P709 | HVLP EDGE II Gun Air Cap |
| 256957 | Quick Clean Check Valve (Full Assembly) |
| 256956 | Quick Clean Check Valve Repair Kit (3-Pack) |
| 256953 | Cleaning Brush Kit |
| 256954 | Deluxe Cleaning Kit—Includes: Detailed Brushes and Picks |
| M71425 | 2 qt (1.9 l) Remote Cup Gaskets (5-pack) |





RAC X™ FF LP SwitchTips™

Breakthrough LOW PRESSURE SmartTip™ Technology,
engineered to deliver the industry's best finish!



Featuring the patented Graco RAC X™
Tip with **SmartTip Technology** and
exclusive internal tip geometry which
delivers the industry's best finish at the
lowest airless spray pressure!



SMART COMBINATION!

- ▶ **SPRAYS AT UP TO 50% LOWER PRESSURE**
- ▶ **LESS OVERSPRAY**
- ▶ **EASIEST PATTERN OVERLAP**
- ▶ **REDUCES PREP & CLEANUP**
- ▶ **UP TO 2X LIFE**

For more information, visit
graco.com/FFLP

SmartTip Technology is designed to work with
Graco's exclusive **SmartControl™ Pressure
Management System** to deliver a superior spray
fan without pressure fluctuations – at all spraying
pressures!

SMARTCONTROL™

INDUSTRY FIRST!
NOW AVAILABLE AT YOUR LOCAL
GRACO DISTRIBUTOR



The Next Generation of No-Tools Pump Removal *Faster and Easier than ever!*

ProXChange Power-Piston Pump

- ▶ **Fast and Easy** on-the-job Pump Replacement System
- ▶ **Exceptional durability** and long life piston pump

Being able to quickly repair a pump on the job site can be the difference between a productive day of spraying and one spent waiting on replacement parts or behind the wheel taking your sprayer to be serviced. Thanks to the ProXChange Pump Repair System, (available on the FinishPro GX 19), Graco makes pump repairs fast and easy. In 4 simple steps, you can remove and replace the pump cartridge (available at many of Graco's Distributors). No more time wasted or money lost to labor charges on pump repairs—with a spare cartridge kit on hand, you'll never have a down day.



- ▶ **Eliminates labor repair costs and drive time expenses**
- ▶ **Quickly and easily repair the pump**
- ▶ **Pinless design needs no tools**



ProX™ Pump Cartridge

- ▶ **Exclusive, lifetime lubricated wiper pad** for maintenance free operation
- ▶ **Modular pump components** for easy maintenance

1



Remove hopper

2



Unlatch and lift door

3



Remove pump

4



Replace cartridge

Airless

FinishPro GX 19

The fast, portable and affordable solution for small finishing jobs that every finishing contractor encounters.

| DESCRIPTION | PART # |
|-----------------|-------------|
| FINISHPRO GX 19 | 17H223 |
| SPECIFICATIONS | |
| MAX TIP SIZE: | 0.019 |
| MAX GPM (LPM): | 0.38 (1.44) |
| MAX PSI (BAR): | 3000 (227) |
| MOTOR: | 1/2 HP DC |
| WEIGHT LB (KG): | 27 (12.3) |

INCLUDES

- 4.7mm x 7.6m BlueMax™ II Hose
- FTx Gun with two-finger trigger
- RAC X FF LP SwitchTip (FFLP210)
- 100-Mesh Gun Filter
- Fluid Pressure Gauge

**Sprays
Most
Solvent-based
Materials**

**Perfect for a dedicated
lacquer sprayer!**

Features

PROXCHANGE



Features

Precision-Cut RAC X FF LP SwitchTip



- ▶ Sprays at lower pressures with less overspray
- ▶ Pre-orifice design produces a perfect airless finish
- ▶ Up to 2X life
- ▶ Finer atomization and soft edges for easier overlapping
- ▶ Reduces prep and cleanup
- ▶ Includes solvent seal for hot solvents

5.7 L Hopper

- ▶ Ideal for spraying small amounts of material
- ▶ Molded design easily attaches to sprayer without any tools
- ▶ Lid included for spill-proof portability
- ▶ Smooth inside surface cleans up fast—solvent resistant
- ▶ Drain line hook ensures the drain tube stays where you want it—*never mess with a drain line again!*

ProX Power-Piston Pump

- ▶ Exceptional durability and long life piston pump
- ▶ Exclusive, lifetime lubricated wiper pad for maintenance free operation
- ▶ Modular pump components for easy maintenance

FTx™ Spray Gun

- ▶ Form fitted handle provides maximum control and comfort
- ▶ Easy Out™ 100 mesh gun filter installed to minimize tip clogs and protect finish
- ▶ EasyGlide Swivel provides maximum flexibility for effortless hose management

Extremely Portable

- ▶ Lighter than any competitive system
- ▶ Easy Carry Handle makes transportation easy
- ▶ Lid prevents splashes and spills while carrying



Introducing the latest high-performance solution for fine finish spraying—FinishPro II Air-Assisted Airless sprayers that deliver an HVLP-quality finish at the speed of an airless sprayer. With this technology, material is delivered to the gun at lower pressure than traditional airless (500-1500 psi vs. 1500-3000 psi) and is partially atomized through a small tip. Full atomization is achieved by adding a small amount of air (5-35 psi) to the edges of the spray fan, resulting in a softer pattern, more control, higher transfer, and less overspray. Only Graco delivers industry-leading features along with proven quality and unmatched performance in a portable, self-contained, air-assisted airless system.

Air-Assisted Airless Technology

G40 Gun Graco's G40 gun is the premier Air-Assisted Airless gun in the industry. From its ultra-light trigger pull to its ergonomic fit, it's a gun by which all others are measured.

- ▶ 8 air ports inject air closer to the tip, resulting in a softer, more consistent spray pattern
- ▶ Integrated filter minimizes tip clogs
- ▶ Air adjustment valve at the gun allows "on the fly" adjustments to maximize performance
- ▶ Flat tip conversion kit accepts industrial-grade flat tips that deliver extremely high performance in low-viscosity, light-bodied materials (Standard on the FinishPro II 395 PC and 595 PC Pro; not included on the FinishPro II 295.)



RAC X FFLP SwitchTip FINE FINISH LOW PRESSURE TIP



Patented Technology

SPRAY AT UP TO 50% LOWER PRESSURE
LESS OVERSPRAY
UP TO 2X LIFE

SmartTip Technology is designed to work with Graco's exclusive SmartControl™ Pressure Management System to deliver a superior spray fan without pressure fluctuations – at all spraying pressures!

Super-Flex Hose Set By increasing flexibility and maneuverability, Graco's Super Flex Hose Set enables you to work in tight confines and helps you increase the quality of finish you're laying down.

- ▶ The flexibility to get into tight spaces—focus on the task, not the tool!
- ▶ Extremely lightweight in hand, which reduces fatigue
- ▶ Connects directly to the gun for maximum flexibility
- ▶ Flex Wrap hose skin protects from material buildup and increases hose durability



SmartComp™ Available on the FinishPro II 395 PC and 595 PC Pro, Graco's SmartComp delivers a superior finish while extending the life of the sprayer. On machine startup, the compressor charges the SmartComp system in 20 seconds. When the trigger is pulled, SmartComp then feeds the gun until the compressor reaches full output, resulting in zero lead/lag in air delivery to the gun. When the trigger is released, SmartComp shuts off the compressor after 5 seconds.

- ▶ Compressor is activated by the gun trigger—if you're not spraying, it's not running!
- ▶ Delivers instant air to the gun with zero lag
- ▶ Reduces jobsite noise, resulting in less fatigue
- ▶ Automatic shut-off reduces moisture entering the system and extends compressor life



Two Sprayers in One!

With just the flip of a switch, change from air-assisted to airless spraying modes for ultimate versatility.

Features

ProConnect™



Graco's exclusive pump removal and replacement system, available on the FinishPro II 395 PC and 595 PC Pro, allows for fast jobsite swapping of the pump (see page 16 for complete details).

- ▶ Eliminates labor repair costs and drive time expenses
- ▶ Quickly swap out the pump for a spare in under a minute
- ▶ Pinless design eliminates the chance of losing parts during the change-out process

High-Output On-Board Air Compressor

All FinishPro II sprayers come complete with on-board air compressors, making them ideal for on-site finish jobs.

- ▶ Delivers 3.2 cfm at 35 psi—enough air to break up the heaviest materials
- ▶ Exclusive Pressure Unloader results in quieter operation
- ▶ Cooling coil reduces air temperature, extending the life of critical components and providing safer operator handling

Graco's Proven Piston Pump All FinishPro II sprayers come with piston pumps for unmatched performance. The FinishPro II 395 PC and 595 PC Pro come with Endurance™ Pumps with V-Max Blue™ packings and Chromex™ rods for extended life.

- ▶ Allows for consistent priming and pumping of even the heaviest materials without thinning
- ▶ QuikAccess™ intake valve makes cleaning or clearing debris easy—all you need is a hammer



Finish Every Job, Every Day

with Graco's ProConnect and Endurance Now™ Program

ProConnect

- ▶ **Fast and Easy** on-the-job Pump Replacement System
- ▶ Available on small and midsize electric sprayers

Being able to quickly change a pump on the jobsite can be the difference between a productive day of spraying and one spent waiting on replacement parts. Thanks to the ProConnect Pump Removal System (available on the FinishPro II 395 PC and FinishPro II 595 PC Pro), Graco makes pump swaps fast and easy. In 3 simple steps and in less than 1 minute, you can remove and replace the pump on select Graco's sprayers with a new replacement pump (available at many of Graco's Distributors).



- ▶ **Eliminates labor repair costs and drive time expenses**
- ▶ **Quickly and easily replace the pump**
- ▶ **Pinless design needs no tools**

Endurance Pump

- ▶ The most rugged and reliable pump on the market today—*lasts 2 times longer than the next leading brand*
- ▶ Long-life V-Max Blue™ packings, Chromex™ rod and hardened stainless steel cylinder
- ▶ QuikAccess™ intake valve requires only a hammer to access the intake ball to clear debris



Loosen the clamping nut



Open door and remove pump



Remove hose and suction tube

Fast Pump Removal

- ▶ 1-minute jobsite replacement
- ▶ Keeps you spraying instead of waiting for service
- ▶ No pins or parts to lose!

Air-Assisted

FinishPro II 395 PC

With features that make a great sprayer even better, the FinishPro II 395 PC is Graco's premier solution to fine finishing. It delivers a high-quality finish at a high production rate and can handle the most challenging materials.

| DESCRIPTION | PART # |
|---------------------|--------|
| FINISHPRO II 395 PC | 17C321 |

SPECIFICATIONS

| | |
|-----------------|----------------|
| MAX TIP SIZE: | 0.021 |
| MAX LPM (GPM): | 1.6 (0.43) |
| MAX BAR (PSI): | 228 (3300) |
| MOTOR: | 7/8 HP TEFC DC |
| WEIGHT KG (LB): | 49 (107) |

INCLUDES

- G40 Gun Air-Assisted Airless Gun
- 15.2m Super Flex Hose Set
 - 6.4 mm x 1.8 m (1/4 in x 6 ft) Fluid Hose
 - 3.2 mm x 1.8 m (1/8 in x 6 ft) Fluid Whip Hose
 - 9.5 mm x 15.2 m (3/8 in x 50 ft) Air Hose
 - 6.4 mm x 1.8 m (1/4 in x 6 ft) Air Whip Hose
- RAC X - FFT210 SwitchTip
- RAC X - LTX517 SwitchTip
- Precision Cut Fine Finish Flat Tip Kit
- AAM309 Flat Tip
- 100 Mesh Gun Filter



Features



Features

SmartComp™

- ▶ Automatically shuts off when not in use—*if you're not spraying, it's not running*
- ▶ Reduces jobsite noise, resulting in less fatigue
- ▶ Automatic shut-off reduces moisture entering the system
- ▶ Extends compressor life

SmartControl™ 1.0

- ▶ Advanced technology delivers a consistent spray fan without pressure fluctuations at all spraying pressures
- ▶ Digital display accurately shows spraying pressure

Two Sprayers in One!

- ▶ Air-assisted with just the flip of a switch—depending on what's best for the application
- ▶ Select air-assisted mode for fine finishing
- ▶ Select airless mode for priming and painting walls

Super-Flex Whip Hose

- ▶ Light, flexible whip hose improves control in tight spaces
- ▶ Flex Wrap hose skin protects from material accumulation and increases durability



Precision-Cut RAC X FF LP SwitchTip

- ▶ Sprays at lower pressures with less overspray
- ▶ Pre-orifice design produces a perfect airless finish
- ▶ Up to 2X life
- ▶ Finer atomization and soft edges for easier overlapping
- ▶ Reduces prep and cleanup
- ▶ Includes solvent seal for hot solvents

Improved G40 Spray Gun

- ▶ An industrial-grade air-assisted spray gun that delivers superior finishing results
- ▶ Integrated air valve improves gun handling

Self-Contained and Portable

- ▶ One plug runs the entire unit, simplifying jobsite operation

Single Selector Switch

- ▶ Simple, color-coded labels easily identify airless and air-assisted modes



Features



Features

More Flow = More Productivity

- ▶ The highest performing air-assisted airless sprayer!

SmartComp

- ▶ Automatically shuts off when not in use—if you're not spraying, it's not running!
- ▶ Reduces jobsite noise, resulting in less fatigue
- ▶ Automatic shut-off reduces moisture entering the system
- ▶ Extends compressor life

SmartControl™ 2.5

- ▶ Advanced technology delivers a consistent spray fan without pressure fluctuations at all spraying pressures
- ▶ Ideal for smaller tips commonly used for fine finish work
- ▶ Digital display accurately shows spraying pressure

Two Sprayers in One!

- ▶ Air-assisted with just the flip of a switch—depending on what's best for the application
- ▶ Select air-assisted mode for fine finishing
- ▶ Select airless mode for priming and painting walls

Super-Flex Whip Hose

- ▶ Light, flexible whip hose improves control in tight spaces
- ▶ Flex Wrap hose skin protects from material accumulation and increases durability



Precision-Cut RAC X FF LP SwitchTip

- ▶ Sprays at lower pressures with less overspray
- ▶ Pre-orifice design produces a perfect airless finish
- ▶ Up to 2X life
- ▶ Finer atomization and soft edges for easier overlapping
- ▶ Reduces prep and cleanup
- ▶ Includes solvent seal for hot solvents

Improved G40 Spray Gun

- ▶ An industrial-grade air-assisted spray gun that delivers superior finishing results
- ▶ Integrated air valve improves gun handling

Self-Contained and Portable

- ▶ One plug runs the entire unit, simplifying jobsite operation

Single Selector Switch

- ▶ Simple, color-coded labels easily identify airless and air-assisted modes

FastFlush Cleaning System

- ▶ Dramatically decreases cleaning time
- ▶ High flow and faster cleaning—up to 4X faster using only half the water!

Gun and Hose Kit Included

- ▶ Airless gun and hose kit are in the box for increased versatility

Air-Assisted

FinishPro II 595 PC Pro

The most versatile FinishPro II sprayer ever, with more performance to get the job done faster, the FinishPro II 595 PC Pro is ideal for large commercial and industrial jobs.

| DESCRIPTION | PART # |
|----------------------------|---------------------|
| FINISHPRO II 595 PC Pro | 17C357 |
| SPECIFICATIONS | |
| MAX TIP SIZE: | 0.027 |
| MAX LPM (GPM): | 2.6 (0.7) |
| MAX BAR (PSI): | 228 (3300) |
| MOTOR: | 1.4 HP Brushless DC |
| WEIGHT KG (LB): | 49 (108) |

INCLUDES

- G40 Air-Assisted Airless Gun
- 15.2 m Super Flex Hose Set
 - 6.4 mm x 15.2 m (1/4 in x 50 ft) Fluid Hose
 - 3.2 mm x 1.8 m (1/8 in x 6 ft) Fluid Whip Hose
 - 9.5 mm x 15.2 m (3/8 in x 50 ft) Air Hose
 - 6.4 mm x 1.8 m (1/4 in x 6 ft) Air Whip Hose
- RAC X FFT210 SwitchTip
- RAC X LTX517 SwitchTip
- Precision Cut Fine Finish Flat Tip Kit
- AAM309 Flat Tip
- 100 Mesh Gun Filter

Air-Assisted

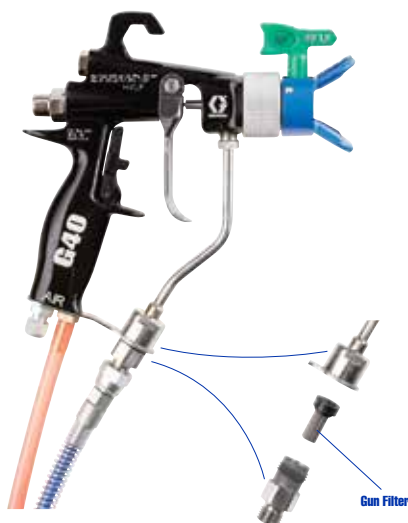
G40

Air-Assisted Airless Gun

Graco's G40 gun is the premier Air-Assisted Airless gun in the industry and comes standard with all FinishPro II sprayers. From its ultra-light trigger pull to the ergonomic fit, it truly is a gun by which all other guns are measured.

Tip Technology

Only Graco gives you the ability to outfit your air-assisted airless sprayer to suit your needs. Whether you need fast high-production spraying or a smooth HVLP-like finish, Graco has you covered.



Features

Industrial Quality

- ▶ An industrial-grade finishing gun, built for years of uninterrupted service

Lightweight, Ergonomic Design

- ▶ Becomes an extension of your hand, allowing you to focus on the finishing task at hand

RAC X Air Cap

- ▶ Accepts RAC X SwitchTips for quick and easy tip clog clean-out
- ▶ Eight air ports inject air closer to the tip, resulting in a softer, more consistent spray pattern

Gun Filter

- ▶ Integrated into the gun to minimize tip clogs
- ▶ Fine mesh results in a superior finish

Air Adjustment Valve

- ▶ Air control at the gun allows "on the fly" adjustments to maximize performance

Precision Cut Fine Finish Flat Tip Kit

- ▶ Air cap utilizes flat tips
- ▶ Extremely high performance in low-viscosity, light-bodied materials (Standard on the FinishPro II 395 PC and 595 PC Pro; not included on the FinishPro II 295.)

Inline Air Moisture Filter

These disposable filters contain a desiccant material that removes 100% of the moisture from air supplied to the gun by the compressor. This is particularly important when spraying solvent-based finishes.

RAC X TIPS VS. PRECISION-CUT FLAT TIPS

| | RAC X FF LP SWITCHTIPS | PRECISION-CUT FINE FINISH FLAT TIPS |
|--------------------------|-------------------------------------------------------------------------------------------------------------------------------------------------------------------------------------------------------------------------------------------------------------------------------------------------------------------------------------------------|------------------------------------------------------------------------------------------------------------------------------------------------------------------------------------------------------------------------------------------------------------------------------------------------------------------------------------------------------------------------------|
| CHARACTERISTICS: | <p>The exclusive internal tip geometry of Graco's RAC X Fine Finish Low Pressure Tips deliver the industry's best finish at the lowest airless spray pressure.</p> <ul style="list-style-type: none"> • Sprays At Up To 50% Lower Pressure • Easiest Pattern Overlap • Less Overspray • Up To 2X Life | <p>The Precision-Cut Flat Tip is designed with stains and lacquers in mind and produces the best atomization for extremely smooth finishes for furniture and similar applications.</p> <ul style="list-style-type: none"> • Delivers softest spray fan • Offers fan width control • Closer to HVLP quality • Zero air cap build up |
| RECOMMENDED USES: | When speed and finish quality are equally important | Where finish quality is the #1 requirement |

Accessories

FINISHPRO AIRLESS

PRECISION-CUT FLAT TIPS

FAN WIDTH

| ORIFICE SIZE – INCHES | | | | | | |
|-----------------------|------|------|------|------|------|------|
| In (mm) | .007 | .009 | .011 | .013 | .015 | .017 |
| 2-4 (51 - 102) | 107 | 109 | 111 | | | |
| 4-6 (102 - 152) | 207 | 209 | 211 | 213 | 215 | 217 |
| 6-8 (152 - 203) | 307 | 309 | 311 | 313 | 315 | 317 |
| 8-10 (203 - 254) | 407 | 409 | 411 | 413 | 415 | 417 |
| 10-12 (254 - 305) | | 509 | 511 | 513 | 515 | 517 |
| 12-14 (305 - 356) | | | 611 | 613 | 615 | 617 |
| Flow Rate (gpm) | 5.2 | 9.1 | 13.0 | 16.9 | 22.0 | 28.5 |
| Flow Rate (lpm) | .15 | .27 | .40 | .50 | .70 | .85 |

Water @ 1000 psi (70 bar, 7.0 MPa) - paints with a higher viscosity will decrease the flow rate. Order desired tip (part no. AAMxxx) from chart above. Example: for a tip with a 0.009 orifice and a 6 in (254 mm) pattern, order AAM309.

RAC X FFLP SWITCH TIPS (Fine Finish Low Pressure)

FAN WIDTH

| ORIFICE SIZE – INCHES | | | | | | | |
|-----------------------|------|------|------|------|------|------|------|
| In (mm) | .008 | .010 | .012 | .014 | .016 | .018 | .020 |
| 2-4 (51-102) | 108 | 110 | 112 | | | | |
| 4-6 (102-152) | 208 | 210 | 212 | 214 | | | |
| 6-8 (152-203) | 308 | 310 | 312 | 314 | | | |
| 8-10 (203-254) | | 410 | 412 | 414 | | | |
| 10-12 (254-305) | | 510 | 512 | 514 | 516 | 518 | 520 |
| 12-14 (305-356) | | | | | 616 | 618 | 620 |
| Flow Rate (gpm) | .07 | .11 | .15 | .21 | .27 | .35 | .43 |
| Flow Rate (lpm) | .26 | .41 | .59 | .80 | 1.04 | 1.32 | 1.63 |

Water @ 2000 psi (138 bar, 13.8 MPa); paints with a higher viscosity will decrease the flow rate. Example: For a tip with a .010 orifice and a 8 in (203 mm) pattern, order FFLP410.

Air-Assisted Accessories

FINISHPRO AIR-ASSISTED AIRLESS

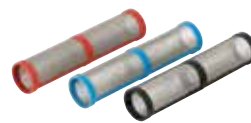
FLUID AND AIR HOSES

- 262929 G40 Air-Assisted Airless Gun
- 24U891 G40 Gun with RAC X Tip and 50 ft Super-Flex Hose Set
- 24U578 25 ft (7.6 m) Super-Flex Fluid and Air Hose Set
- 24U579 50 ft (15.2 m) Super-Flex Fluid and Air Hose Set
- 278750 1/8 in x 6 ft (3.2 mm x 1.8 m) Super-Flex Whip-Fluid
- 278751 1/4 in x 6 ft (6.4 mm x 1.8 m) Super-Flex Whip-Air
- 24U577 50 ft (15.2 m) Flex Wrap Hose Protector
- 24U576 25 ft (7.6 m) Flex Wrap Hose Protector
- 214698 3/16 in x 25 ft (4.76 mm x 7.6m) BlueMax II Hose



FILTERS AND STRAINERS

- 224454 G40 Gun Filter, 60 Mesh (5-pack)
- 224453 G40 Gun Filter, 100 Mesh (5-pack)
- 257129 Contractor™ II & FTx Gun Filter, 60 Mesh (1 per card)
- 287033 Contractor II & FTx Gun Filter, 100 Mesh (1 per card)
- 257130 Contractor II & FTx Gun Filter, 200 Mesh (1 per card)
- 257094 Manifold Filter, 40 Mesh
- 246384 Easy Out Manifold Filter, Black 60 Mesh
- 246382 Easy Out Manifold Filter, Blue 100 Mesh
- 246383 Easy Out Manifold Filter, Red 200 Mesh
- 246385 Pump Inlet Strainer
- 127465 Disposable, Inline Air Moisture Filter (Single)
- 24U981 Disposable, Inline Air Moisture Filter (5-pack)
- 24U982 Disposable, Inline Air Moisture Filter (25-pack)



MAINTENANCE AND REPAIR KITS


- 17H171 Hopper Assembly 1.5 gal (5.7 l) molded hopper attaches to sprayer in place of inlet suction hose. Ideal for spraying small amounts of material. Lid included. Smooth inside cleans up fast.
- 288514 Precision Cut Flat Tip Conversion Kit—G40 Gun
- 289108 Severe Solvents Suction Set (For use on FinishPro II 395 PC and 595 PC Pro sprayers only.)
- 288839 G40 RAC X Air Cap

PUMP REPAIR PARTS

- 17C487 Replacement Pump—Replace pump on the job (For use on FinishPro II 395 PC and 595 PC Pro sprayers only.)
- 24Y472 ProXChange Repair Kit (For use on FinishPro GX 19 sprayer only.)



Fine Finish Sprayer Specifications

| | | STANDARD SERIES | | PROCONTRACTOR SERIES | | | PROCOMP SERIES |
|--------------------------------------------------------------------------------------|-----------------------------|--------------------------------|--------------------------------|--------------------------------|----------------------------------------------------|----------------------------------------------------------------------------------|----------------------------------------------------------------------------------|
| | | FINISHPRO HVLP 7.0 | FINISHPRO HVLP 9.0 | FINISHPRO HVLP 7.0 | FINISHPRO HVLP 9.0 | FINISHPRO HVLP 9.5 | FINISHPRO HVLP 9.5 |
| | | EXTREME CONTROL | | | | | |
| SPECIFICATIONS | Technology | High Volume Low Pressure | High Volume Low Pressure | High Volume Low Pressure | High Volume Low Pressure | High Volume Low Pressure | High Volume Low Pressure |
| | Maximum psi (bar) | 7.0 (0.48) | 9.0 (0.62) | 7.0 (0.48) | 9.0 (0.62) | 9.5 (0.65) | 9.5 (0.65) |
| | Turbine Stages | 3-Stage | 4-Stage | 3-Stage | 4-Stage | 5-Stage | 5-Stage |
| | Cup qt (l) | 1 (1) | 1 (1) | 1 (1) | 1 (1) | 1 (1) | 2 (1.9) |
| | Weight lb (kg) | 18 (8.1) | 19 (8.6) | 23 (10.4) | 24 (10.8) | 26 (11.7) | 30 (13.6) |
| | Max Hose | 40 ft (12 m) | 40 ft (12 m) | 60 ft (18 m) | 60 ft (18 m) | 60 ft (18 m) | 60 ft (18 m) |
| | Air Ball Valve Included | No | No | Yes | Yes | Yes | Yes |
| | Artisan Air Valve Installed | No | No | Yes | Yes | Yes | Yes |
|  | | | | | | | |
| MOD-EL | Part Number | 17R074 | 17R075 | 17R078 | 17R079 | 17R080 | 17R081 |
| INCLUDES | Gun | EDGE II | EDGE II | EDGE II PLUS | EDGE II PLUS | EDGE II PLUS | EDGE II PLUS |
| | Hose | 20 ft (6m) Super-Flex Air Hose | 20 ft (6m) Super-Flex Air Hose | 30 ft (9m) Super-Flex Air Hose | 30 ft (9m) Super-Flex Air Hose | 30 ft (9m) Super-Flex Air Hose & Whip Hose | 30 ft (9m) Super-Flex Air Hose & Whip Hose |
| | Quick Release Fluid Set | #3 (0.051 in, 1.3 mm) | #3 (0.051 in, 1.3 mm) | #3 (.051 in, 1.3 mm) | #3 (.051 in, 1.3 mm) #4 (.071 in, 1.8 mm) | #3 (0.051 in, 1.3 mm) #4 (0.071 in, 1.8 mm) #5 (0.087 in, 2.2 mm) | #3 (0.051 in, 1.3 mm) #4 (0.071 in, 1.8 mm) #5 (0.087 in, 2.2 mm) |
| | Filter | Foam | Foam | Automotive main filter | Automotive main filter | Automotive main filter | Automotive main filter |
| WEAR PARTS | Gun Maintenance Kit | 256960 | 256960 | 256960 | 256960 | 256960 | 256960 |
| | Gun Repair Kit | 17P708 | 17P708 | 17P708 | 17P708 | 17P708 | 17P708 |
| MANUAL | Turbine | 3A4967 | 3A4967 | 3A4967 | 3A4967 | 3A4967 | 3A4967 |
| | Gun | 3A4980 | 3A4980 | 3A4980 | 3A4980 | 3A4980 | 3A4980 |

| | | FINISHPRO GX 19 | FINISHPRO II 395 PC | FINISHPRO II 595 PC PRO |
|----------------|-------------------|----------------------------------|---------------------------------------------|---------------------------------------------|
| | | HIGH PRODUCTIVITY | | |
| SPECIFICATIONS | Technology | Airless | Air-Assisted Airless | Air-Assisted Airless |
| | Flow lpm (gpm) | 1.44 (0.38) | 1.78 (0.47) | 2.6 (0.7) |
| | Max Tip - Airless | 0.019 | 0.021 | 0.027 |
| | Weight kg (lb) | 12.3 (27) | 48.5 (107) | 49.0 (108) |
| | Motor hp (dc) | 1/2 | 7/8 TEFC | 1.4 Brushless |
| | Filter(s) | 100 mesh gun filter | 100 mesh gun filter 100 mesh unit filter | 100 mesh gun filter 100 mesh unit filter |
| | Tips | RAC X FFT210 | RAC X FFT210 RAC X LTX517 AAM309 | RAC X FFT210 RAC X LTX517 AAM309 |
| | Fluid Hose | 4.8 cm x 7.6 m (3/16 in x 25 ft) | 6.4 cm x 15.2 m (1/4 in x 50 ft) | 6.4 cm x 15.2 m (1/4 in x 50 ft) |
| | Fluid Whip Hose | N/A | 3.2 mm x 1.8 m (1/8 in x 6 ft) | 3.2 mm x 1.8 m (1/8 in x 6 ft) |
| | Air Hose | N/A | 9.5 mm x 15.2 m (3/8 in x 50 ft) | 9.5 mm x 15.2 m (3/8 in x 50 ft) |
| | Air Whip Hose | N/A | 6.4 mm x 1.8 m (1/4 in x 6 ft) | 6.4 mm x 1.8 m (1/4 in x 6 ft) |
| | Hose Wrap | N/A | Flex Wrap | Flex Wrap |
| | Compressor Output | N/A | 3.2 cfm at 35 psi (82 lpm) | 3.2 cfm at 35 psi (82 lpm) |



| MODEL | Part Number | 17H223 | 17C321 | 17C357 |
|----------------|------------------|--------------------------------------|---------------------------------------|--------------------------------------------------------------|
| INCLUDES | Gun | Fix with RAC X Switch Tip | G40 with RAC X SwitchTip and Flat Tip | G40 with RAC X SwitchTip and Contractor with RAC X SwitchTip |
| | SmartComp | No | Yes | Yes |
| MANUAL | Operation/Parts | 3A3212 | 333120 | 333120 |
| ENDURANCE PUMP | Replacement Pump | 24Y472 ProX (Replacement kit) | 17C488 (Full Endurance Pump) | 17C488 (Full Endurance Pump) |



ABOUT GRACO

PROVEN QUALITY. LEADING TECHNOLOGY.

Founded in 1926, Graco is a world leader in fluid handling systems and components. Graco products move, measure, control, dispense and apply a wide range of fluids and viscous materials used in vehicle lubrication, commercial and industrial settings.

The company's success is based on its unwavering commitment to technical excellence, world-class manufacturing and unparalleled customer service. Working closely with qualified distributors, Graco offers systems, products and technology that set the quality standard in a wide range of fluid handling solutions. Graco provides equipment for spray finishing, protective coating, paint circulation, lubrication, and dispensing sealants and adhesives, along with power application equipment for the contractor industry. Graco's ongoing investment in fluid management and control will continue to provide innovative solutions to a diverse global market.

GRACO LOCATIONS

MAILING ADDRESS

P.O. Box 1441
Minneapolis, MN 55440-1441
Tel: 612-623-6000
Fax: 612-623-6777

AMERICAS

MINNESOTA

Worldwide Headquarters
Graco Inc.
88-11th Avenue N.E.
Minneapolis, MN 55413

EUROPE

BELGIUM

European Headquarters
Graco N.V.
Industrieterrein-Oude Bunders
Slakweidestraat 31
3630 Maasmechelen,
Belgium
Tel: 32 89 770 700
Fax: 32 89 770 777

ASIA PACIFIC

AUSTRALIA

Graco Australia Pty Ltd.
Suite 17, 2 Enterprise Drive
Bundoora, Victoria 3083
Australia
Tel: 61 3 9468 8500
Fax: 61 3 9468 8599

CHINA (AP Headquarters)

Graco Fluid Equipment
(Shanghai) Co., Ltd
Building 7
1029 Zhongshan Road South
Huangpu District
Shanghai 200011
The People's Republic of China
Product Hotline:
86 512 6260 5711
Fax: 86 21 649 50077

INDIA

Graco India Pvt Ltd
Plot No 295, Udyog Vihar Phase-IV
Gurugram - 122015 (Haryana)
India
Tel: 91 124 661 0200
Fax: 91 124 661 0201

JAPAN

Graco K.K.
1-27-12 Hayabuchi
Tsuzuki-ku
Yokohama City, Japan 2240025
Tel: 81 45 593 7300
Fax: 81 45 593 7301

KOREA

Graco Korea Inc.
38, Samsung 1-ro 1-gil,
Hwaseong-si, Gyeonggi-do. 18449
Republic of Korea
Tel : 82 31 8015 0961
Fax : 82 31 613 9801

SALES/ DISTRIBUTION/ SERVICE

Call today for product information or to request a demonstration.

03 9468 8500 or visit us at www.graco.com.

Graco Inc. is registered to I.S. EN ISO 9001

Address

Suite 17 & 18, 2 Enterprise Drive,
Bundoora, VIC 3083, Australia
Customer Service
03 9468 8500